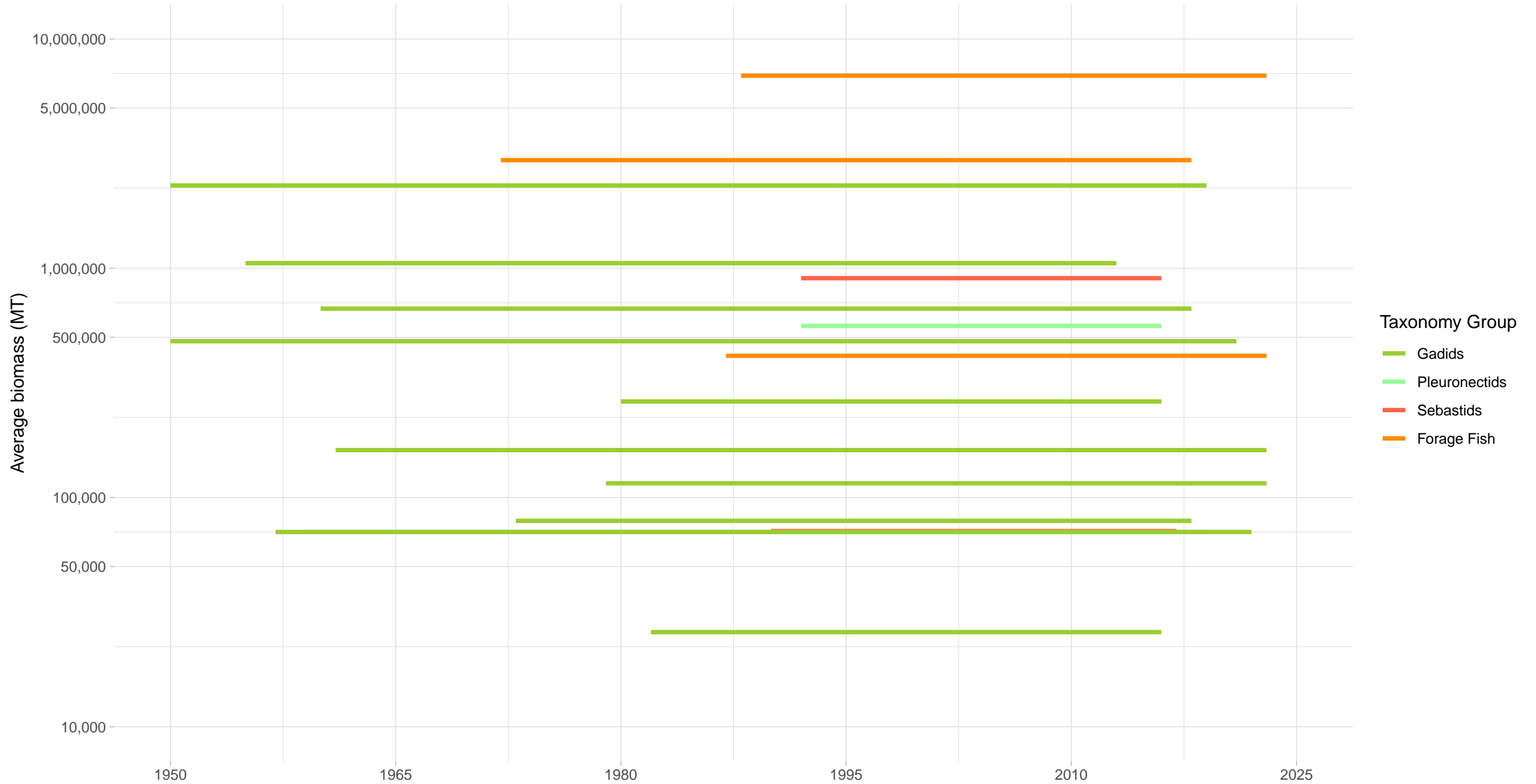
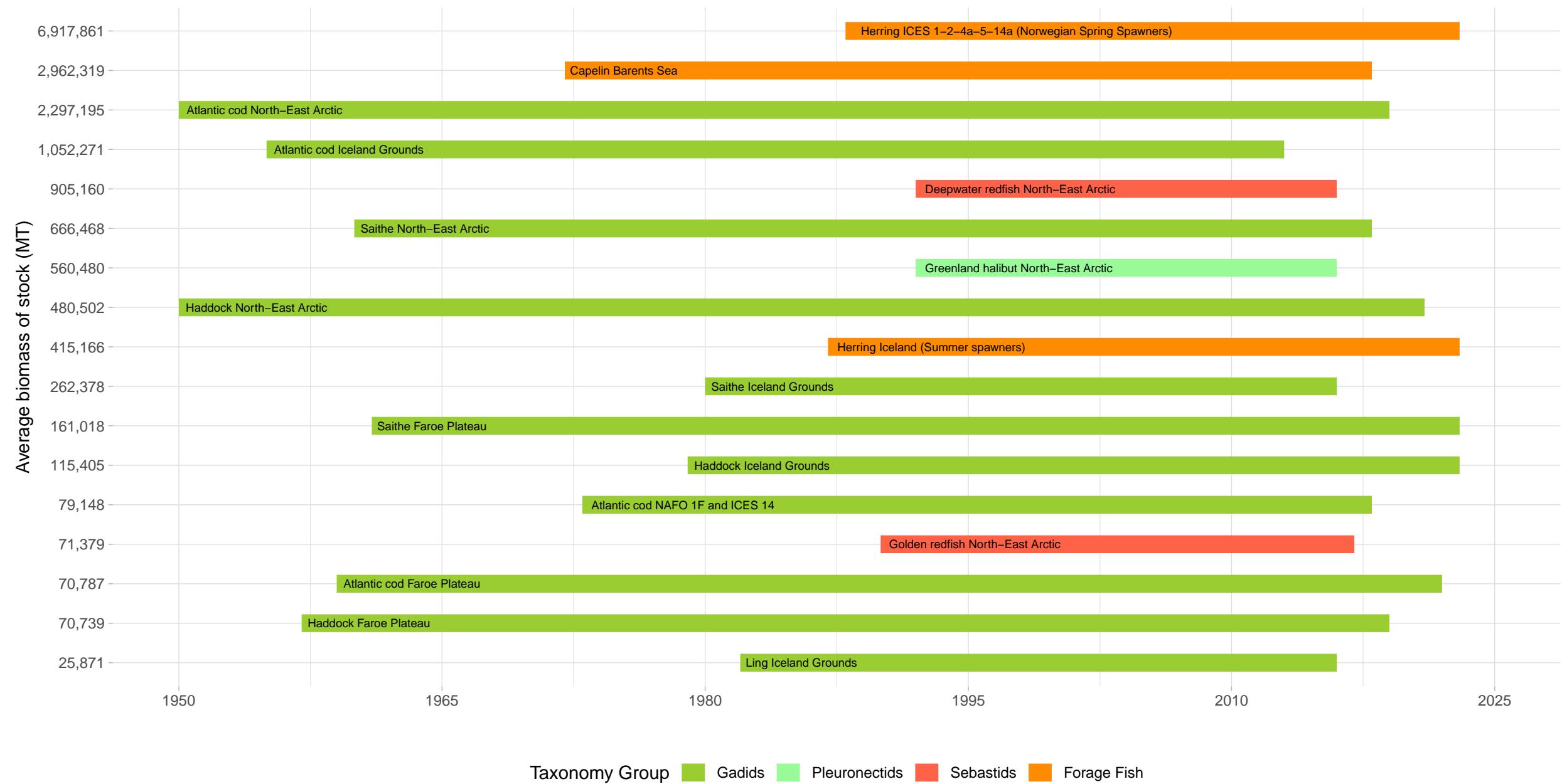


Biomass Coverage in Norway, Iceland, Faroe Islands Region

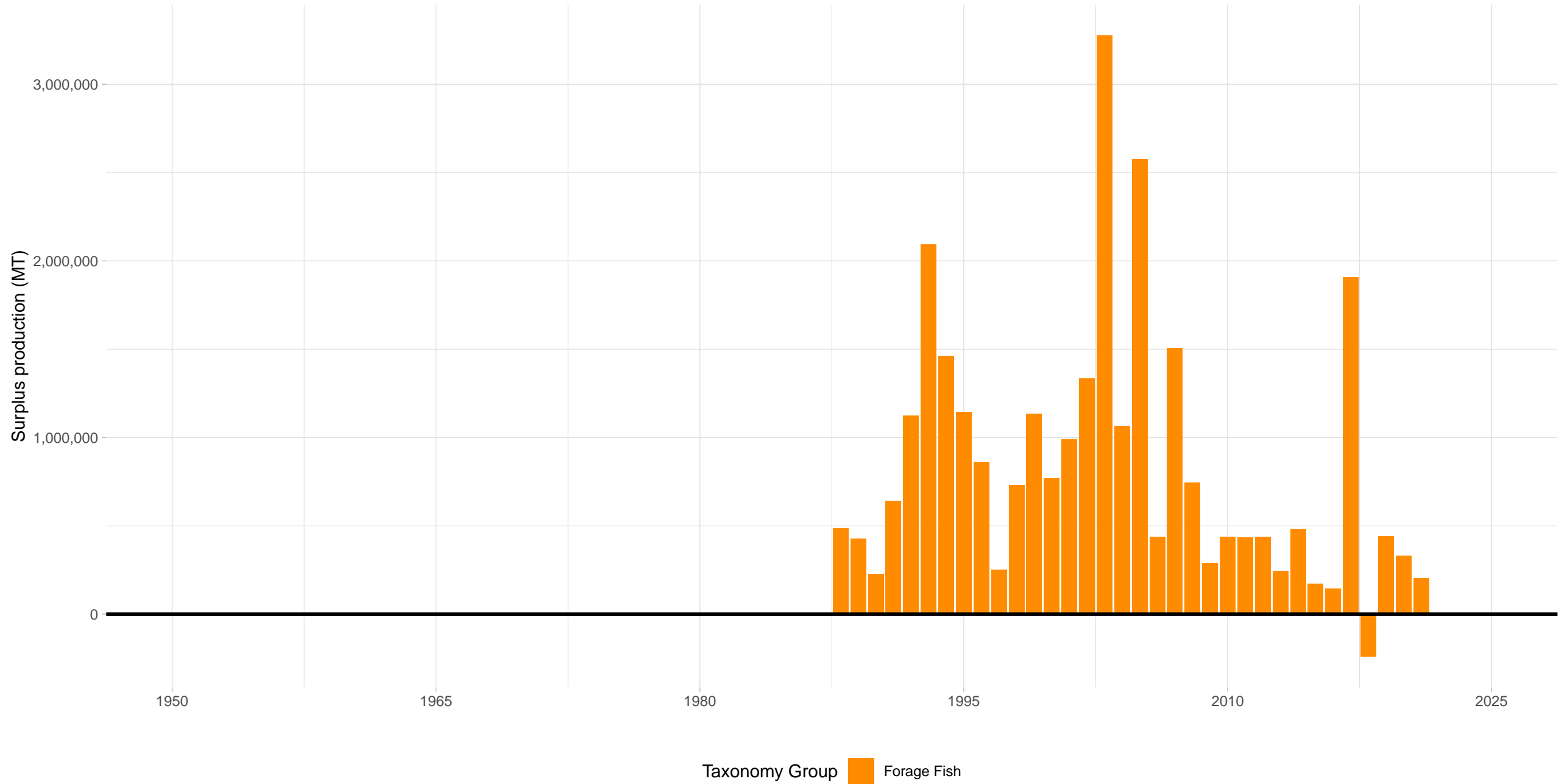


Biomass Coverage Over Time in Norway, Iceland, Faroe Islands Region
Stocks ordered from lowest to highest average biomass



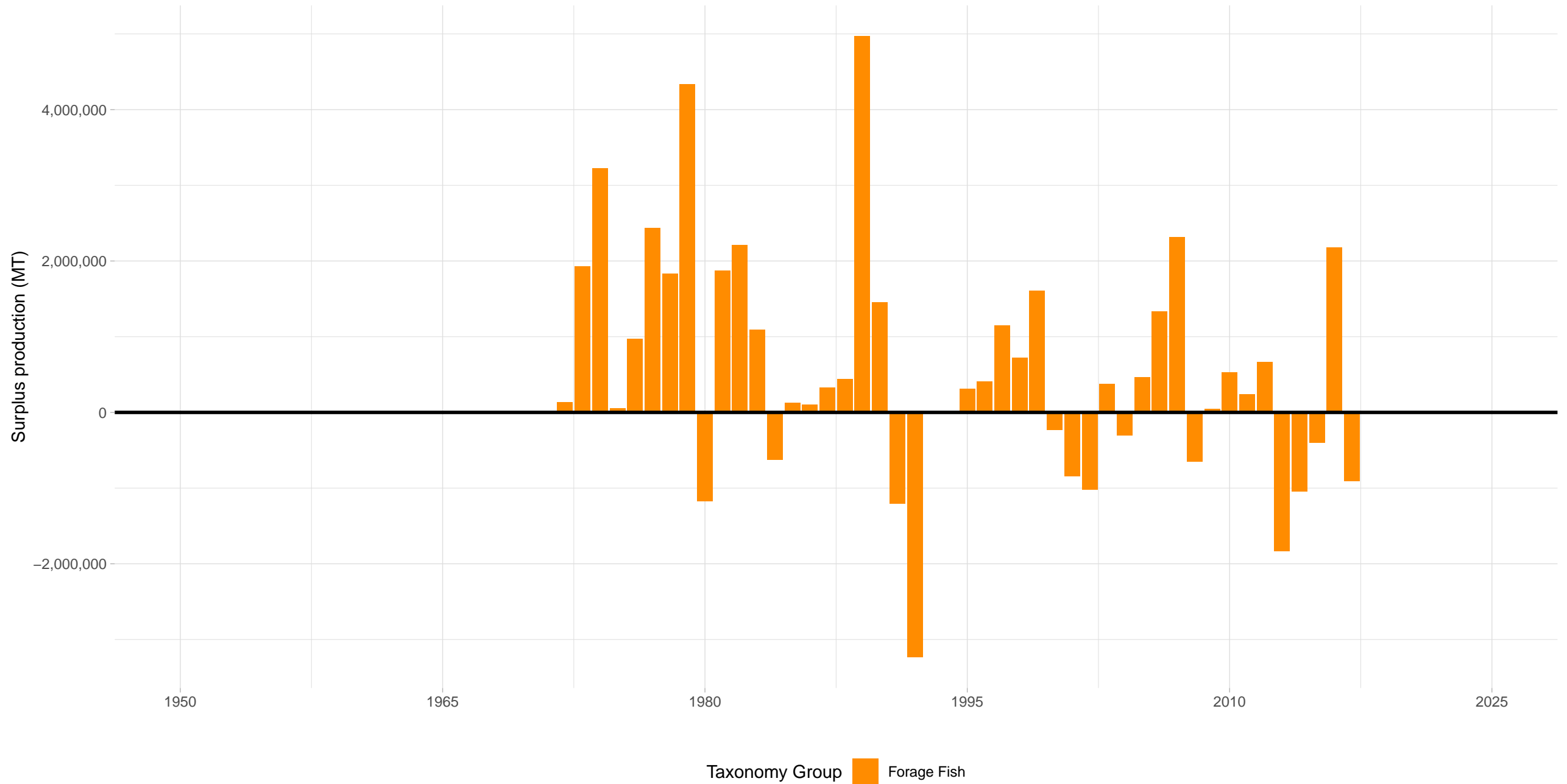
Herring ICES 1–2–4a–5–14a (Norwegian Spring Spawners) – Norway, Iceland, Faroe Islands Region

Stock represents 23% of average absolute surplus production



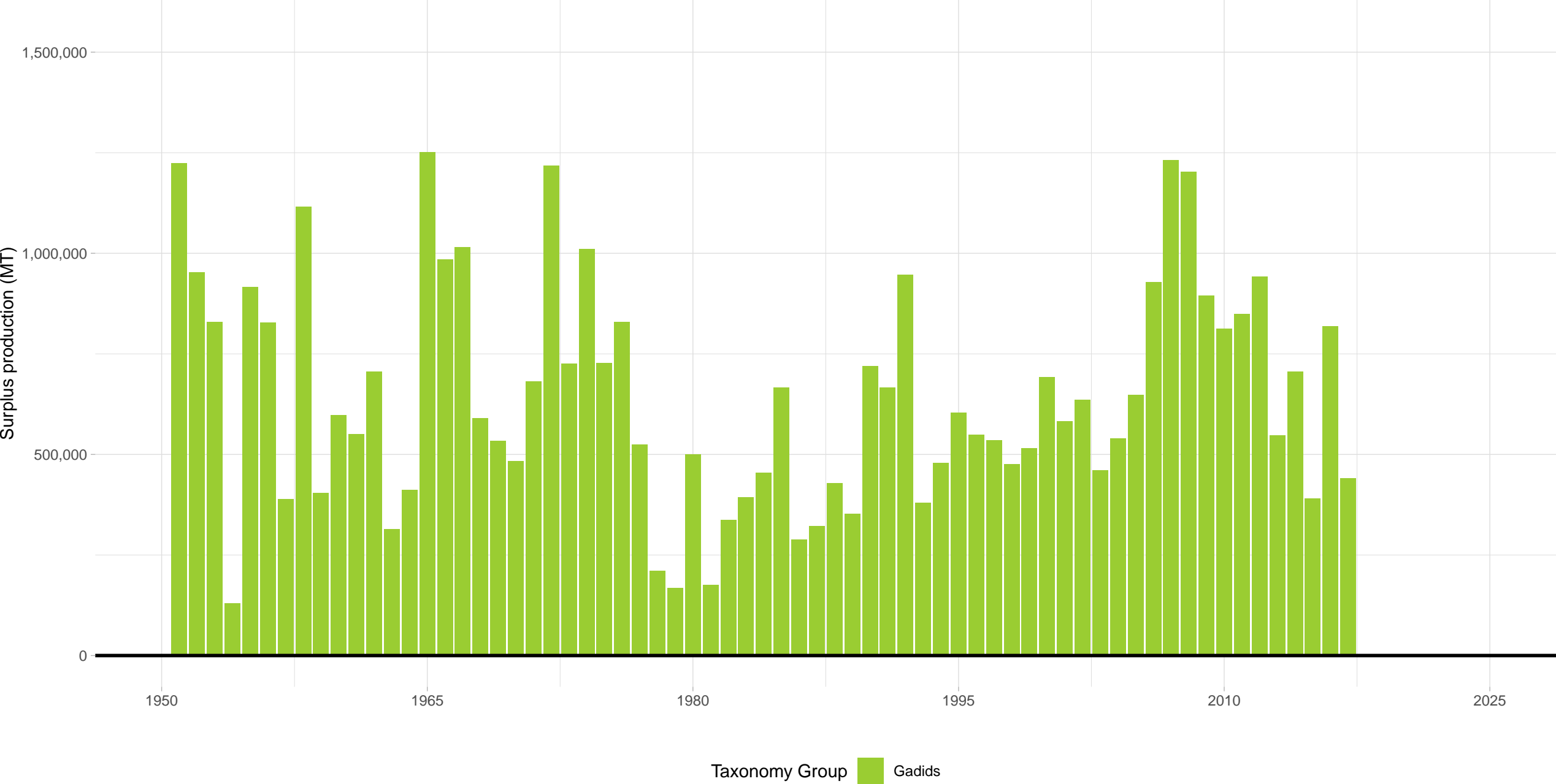
Capelin Barents Sea – Norway, Iceland, Faroe Islands Region

Stock represents 31% of average absolute surplus production



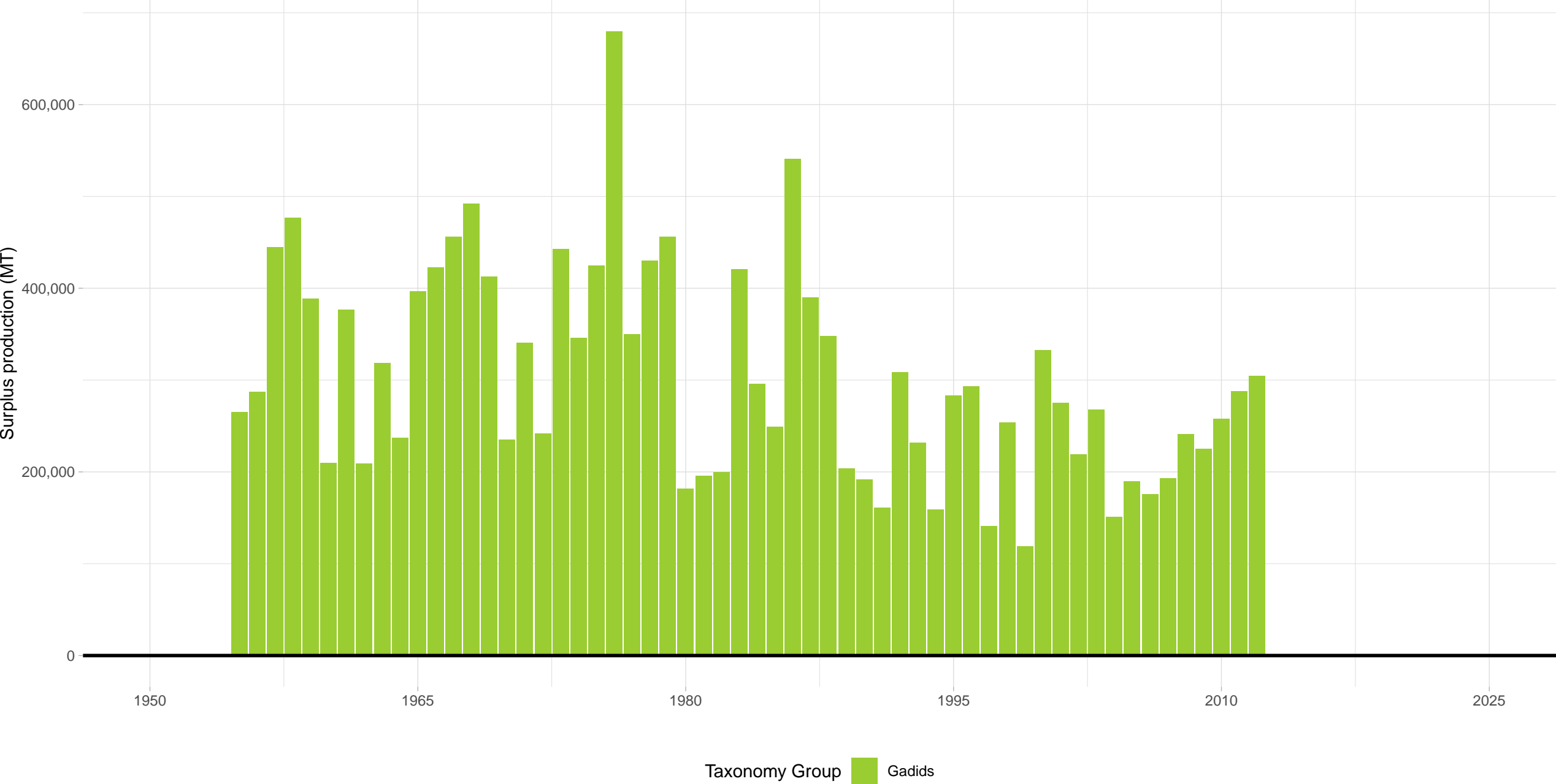
Atlantic cod North-East Arctic – Norway, Iceland, Faroe Islands Region

Stock represents 18% of average absolute surplus production

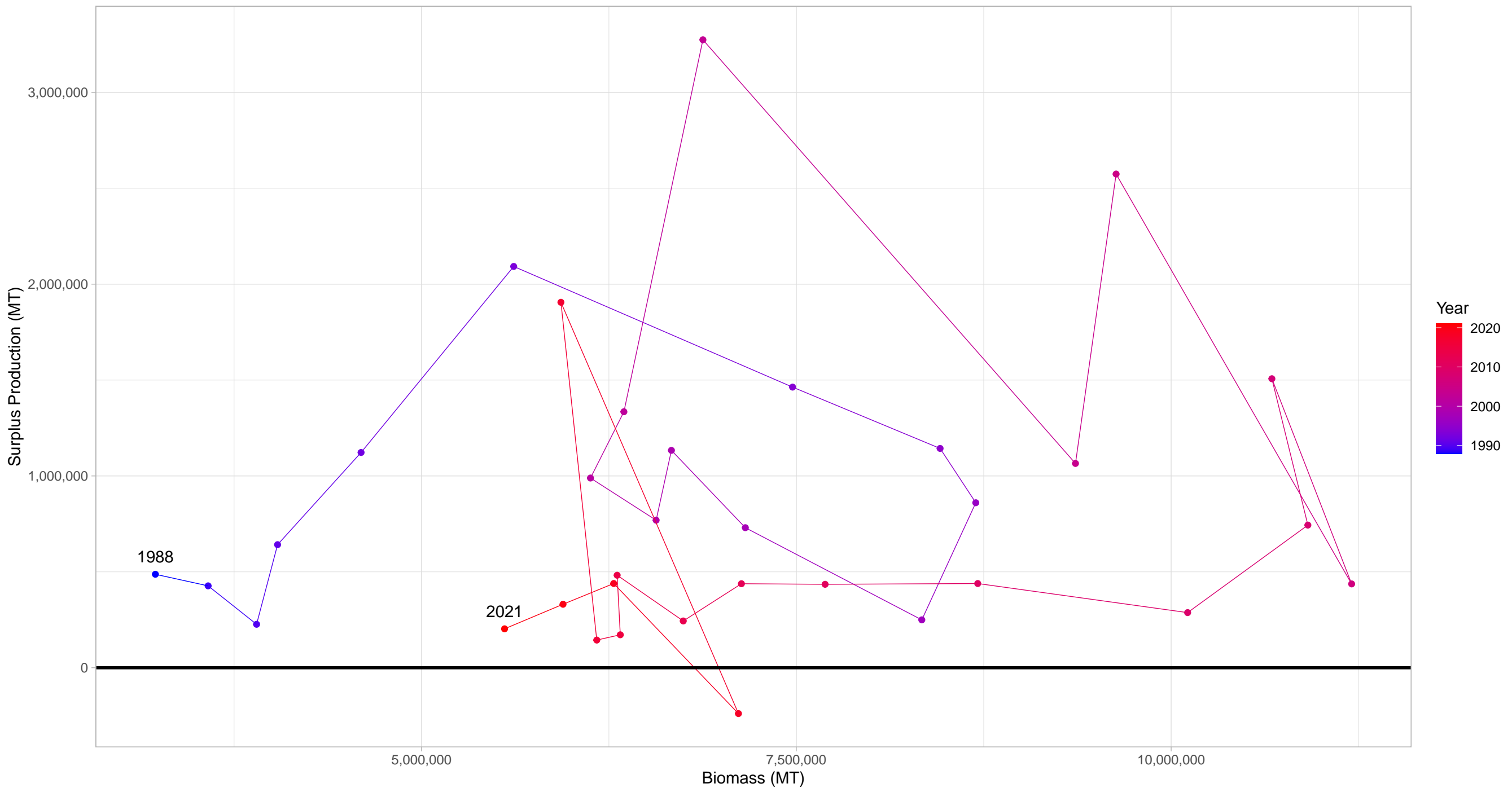


Atlantic cod Iceland Grounds – Norway, Iceland, Faroe Islands Region

Stock represents 8% of average absolute surplus production

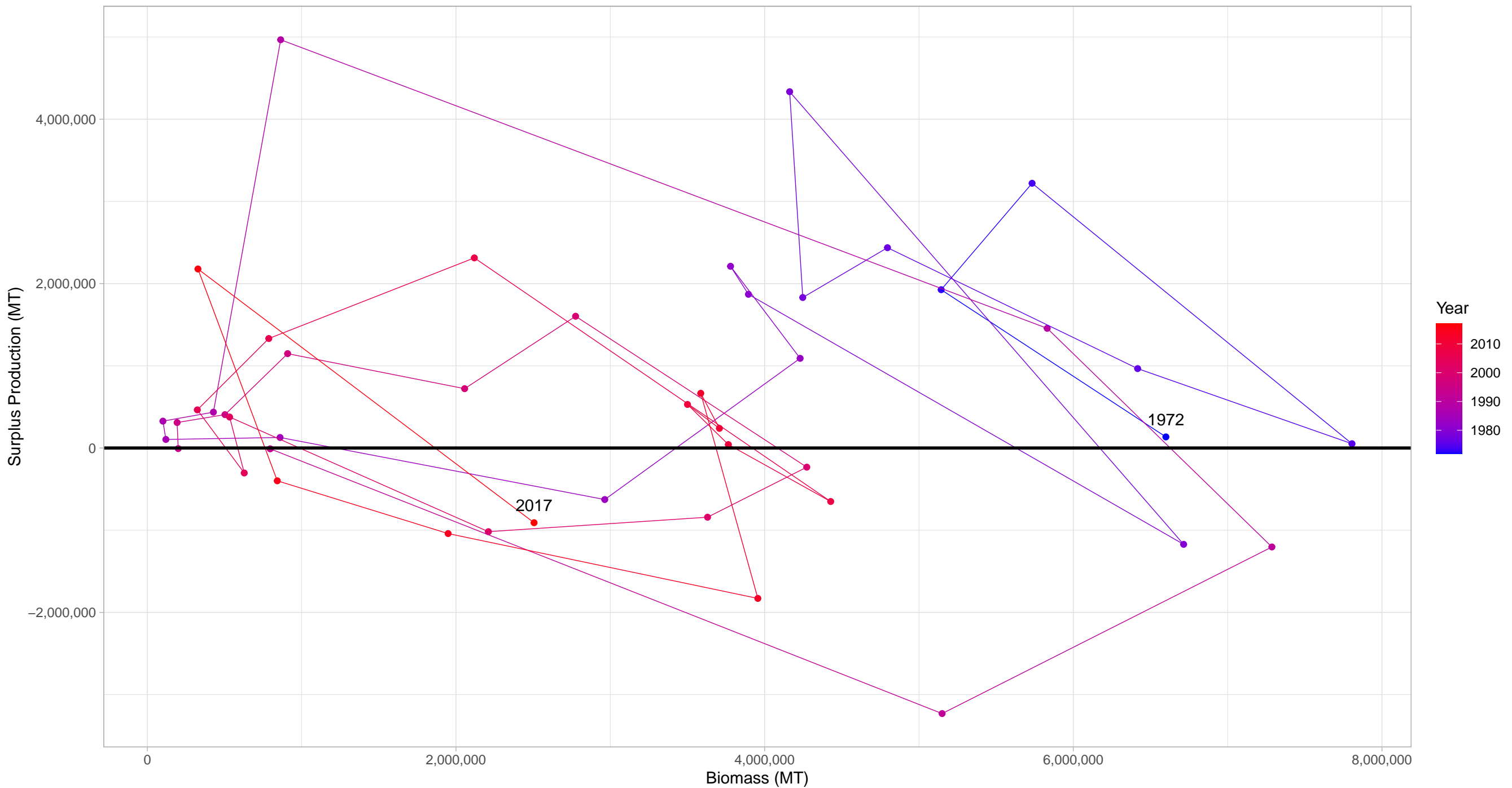


Herring ICES 1-2-4a-5-14a (Norwegian Spring Spawners) in Norway, Iceland, Faroe Islands Region



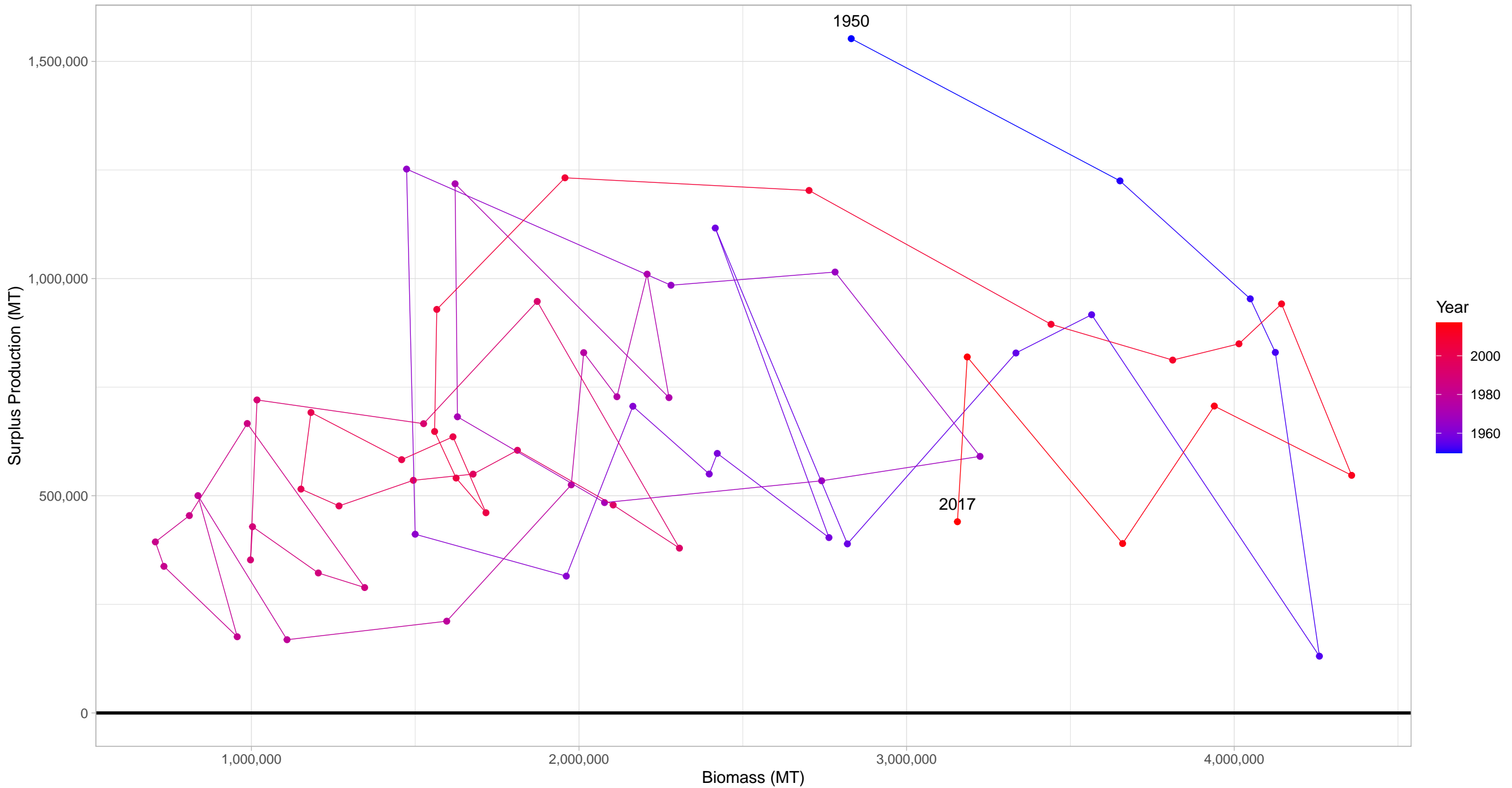
First and last years with recorded surplus production are labeled

Capelin Barents Sea
in Norway, Iceland, Faroe Islands Region



First and last years with recorded surplus production are labeled

Atlantic cod North-East Arctic in Norway, Iceland, Faroe Islands Region



First and last years with recorded surplus production are labeled

Atlantic cod Iceland Grounds in Norway, Iceland, Faroe Islands Region

